

ON WHEELS

COMPANHIA
INTEGRADA

CiM

MULTIDISCIPLINAR

A STREET PERFORMANCE

CiM COMPANHIA INTEGRADA MULTIDISCIPLINAR



ON WHEELS

A TURNING WORLD

STREET PERFORMANCE
dance, theatre, circus

ON WHEELS

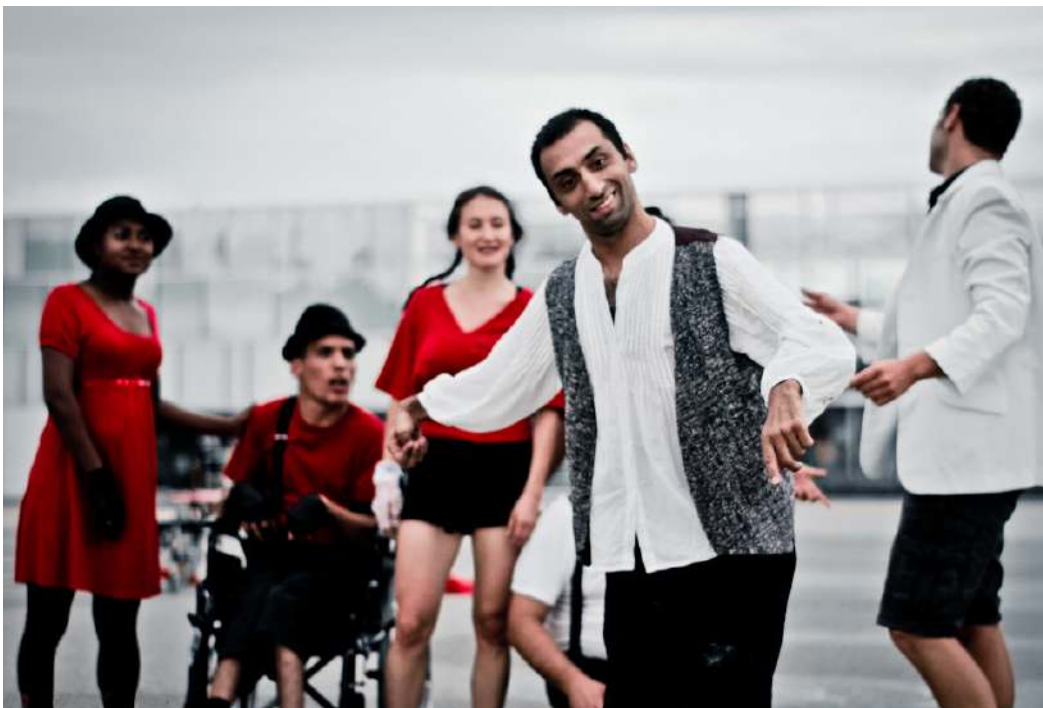
Everything on wheels! roaming on wheels, talking of wheels, wheeling around each other.

A little troupe, suddenly shows up from the unknown. Mysteriously sliding and opening up a path, presents the delicious story of an ever travelling group of characters exploring encounters among them and the public. Circling around, they address to a present moment in transformation towards a circular world. Spinning and dancing, a poetical perception is drawn upon the limit of some being the infinite of others. Does the world fit on a wheel?

On Wheels is a deambulation around one's relation abilities and inner dynamics. It leads to question body limits, as well as the magic of conquering new spaces and intuitions, in and out of our own confort zone.

Designed for open spaces (squares, patiums, atriums), the performance has as support mobile structures, which allow the interaction between dancers, interpreters and public. It may also include musicians and or other interpreters from the local community by developping a one week ensemble workshop previously to the presentation, leading way to a collective artistic experience.





The public from Coruña, mostly composed by children, warmly welcomed the Portuguese performance, in which wheelchairs crossed tricycles and smiles overcame all obstacles.

La Opinión A Coruña, Luis P. Ferreiro (performance at Empape, 2010)

“I have changed a lot psychologically, I now have more self-esteem, trust in myself. What I do, I do with pleasure, with energy. I’m capable!”

José Marques

“It has changed my life, now I can see other countries. Grow up, think differently by the contact with people outside from the Centre (dancers). I feel my body is available for movement.”

Zaida Puglise



PRESS

2011 | Festival Chalon Dans la Rue

Much more than the naked gesture of dance, the expressions danced by CiM brightly demonstrate that common people and disabled can share a sort of invented normalcy which extends onto infinity. With effect, even there unity is strength.

Life is beautiful under these conditions. Integrated Multidisciplinary Company is the only Portuguese company stepping the soil of Chalon, which it has just met much enthusiastically, even after touring around Portugal, Spain, Italy, Germany, U.S.A., Brazil and France. Here, disabled bearing cerebral palsy are treated just as anyone else by those who have no handicap in their bodies. The performance "On Wheels" resembles to a life lesson in which voyeurism or shouting moralizing truths have little meaning and deserve to be banished. The characters establish relationships

between them and the audience, it is the present that finds itself shifting to a new form as it brings within it the seeds of the future.

At this wide open factory, the cycle of life, either moving in great speed, either slow or in dead lock, produces frames full of poetry, suavity and subtlety. In this sort of register, freshness struggles with deep feelings. The nearly tangible and sometimes unperceivable lightness prove a hard work that is indisputably done upstream. It is beautiful, joyful, touching until the end, a sort of communion during which the public is invited to join the interpreters in a collective frenzy. The bet is won without effort, consisting on the sum of talents being felt as an artistic company. With no special connotation...

Michel Poirault in infos-chalon.com

Uma semana de "inclusão por arte"

FRANCISCO CUNHA
Escritor e jornalista



Teatro Micaelense dedica esta semana à realização de espetáculos com e para pessoas com necessidades especiais

O teatro Micaelense acolhe durante esta semana uma série de espetáculos virados para pessoas portadoras de deficiência, numa iniciativa da Companhia Integrada Multidisciplinar (CIM), dedicada a espetáculos com pessoas de necessidades especiais, e a associação cultural VOARTE.

O principal espetáculo da semana decorre no Sábado à partir das 21h00, através da peça de teatro "O Aqui", que junta em palco 12 intérpretes entre bailarinos profissionais, portadores de deficiência e técnicos de acompanhamento, num guião cujas coreografias foram baseadas nas experiências pessoais dos seus intérpretes.

De acordo com António Barata, responsável pela CIM, o esforço da sua companhia não passa por "criar um espetáculo com pessoas deficientes, é sim um espetáculo normal com pessoas deficientes. O nosso objetivo principal é a arte. A tentativa surge indirectamente".

Outra particularidade do "O Aqui" é a composição das músicas, da autoria de João Gil, que fez parte dos Trossante.

As performances saem também do palco com o espetáculo "Sobre Rodas", inspirado nos artes circenses e teatro de rua, que decorre na Praça Gonçalo Velho

no Domingo, pelas 17h00. Este tipo de iniciativa vai ao encontro de um dos objetivos declarados da CIM, conforme indica António Barata. "Queremos tirar os espetáculos do registo de dentro das quatro paredes. Antes era só os pais que os viam, mas agora, eles estão a actuar em teatros para o grande público".

A par de actuar em sua companhia, a CIM alargou as

suas actividades aos locais de São Miguel através de um Workshop Multidisciplinar de Integração, orientado pela coreógrafa Ana Rita Barata, que conta já com 39 inscrições de diversas associações dedicadas aos deficientes. O seu resultado final será apresentado no Domingo.

A coreógrafa indica que trabalhar com pessoas com necessidades especiais constitui um

desafio porque "temos que nos acostumar a trabalhar com pessoas que reagem mais lentamente e têm mais alguma dificuldade em aprender coisas", mas qualifica todos os processos como "gratificante", com benefícios para ambos os lados, tanto professores como alunos. "Éria uma oportunidade de crescimento forte entre ambos", explica Ana Rita Barata. "Não nos podemos esquecer que

muitas destas pessoas nunca tinham sido de casa por vários dias". As artes cinematográficas também estão presentes através do "InShadow", um festival Internacional de Vídeo, Performance e Teólogias. Os filmes premiados da primeira edição serão exibidos hoje à noite, pelas 21h30.

"Estes são filmes virados para as novas tecnologias, um tipo de trabalho ao qual me recejo", explica o realizador Pedro Sousa Nunes, que também apresentará a sessão de cinema. "A inclusão do InShadow também permite-nos aproveitar ao máximo a disponibilidade que nos foi colada pelo Teatro Micaelense".

A última iniciativa surge através de uma exposição de trabalhos de João Ribeiro, criadas no âmbito do espetáculo "O Aqui". Como explica António Barata, "têm um desafio de reproduzir os movimentos pelos desenhos, e desde aí ele nunca mais parou de os desenhar".

Os espetáculos da CIM têm tido um sucesso considerável, com já cerca de 16000 espectadores desde o início do projeto.

As digressões realizadas pela CIM incluem até performances a nível internacional, tendo feito sucesso no Festival de Teatro e Artes de Rua em Valladolid em 2008, e recebendo convites para um festival em Washington, EUA. António Barata indicou mesmo que "temos mais convites para actuarmos no estrangeiro do que em Portugal".

Luis P. Ferreiro
A CORUÑA

Al final, los elementos no pudieron con el entusiasmo de los artistas que forman la Compañía Integrada Multidisciplinar, de Portugal, que inauguró ayer el festival internacional de danza en paisajes urbanos Empape con el espectáculo *Sobre rodas*, que durante tres cuartos de hora, hizo disfrutar a público y transeúntes en la Plaza de María Pita.

El grupo que inauguró Empape —que volverá a actuar hoy, a las 12.00 horas, en la rotunda de Riazor— tiene como particularidad que muchos de sus artistas son discapacitados.

El fundador de la compañía afirma que sus objetivos son artísticos, no terapéuticos

Pedro Nunes, creador de la Compañía Integrada Multidisciplinar junto a Ana Rita, lleva tres años moviendo a sus artistas por todo el mundo: "Tenemos una amplia trayectoria internacional. Hemos actuado en Italia, Brasil, Francia... Incluso en el festival más importante para discapacitados del mundo, que se celebra en Washington, la capital de Estados Unidos".



Un momento de la actuación de la Compañía Integrada Multidisciplinar, ayer en María Pita. / FERNANDO VIZCAYA

Sonrisas sobre ruedas

La Compañía Integrada Multidisciplinar, de Portugal, inaugura el festival de danza urbana Empape con un alegato a favor de la integración de los discapacitados

"Gozamos de un material humano muy fuerte" — afirma Nunes —. "Tenemos una gran intención de continuidad con este proyecto, que combina deseos y voluntades. Con nuestros espectáculos no hacemos terapia, pese a que colaboramos con varias asociaciones de discapacitados". Nunes remarca

que los objetivos del grupo no son terapéuticos, sino meramente culturales: "Queremos mirarlo como arte, pero es obvio que la terapia acaba apareciendo", teniendo en cuenta el grado tan fuerte de motivación que muestran nuestros artistas, pero insiste en que ese no es nuestro principal objetivo".

El fundador del grupo corrobora su éxito artístico, más allá del beneficio que le pueden proporcionar a sus componentes, con las espontáneas reacciones que provocan en el público que tiene la oportunidad de presenciar sus actuaciones: "El público responde de una manera muy cálida y entusiasta, y gracias

a nuestra relevancia me voy a poder dedicar a tiempo completo a la compañía". El público coruñés, formado en su mayoría por niños, derrocha calor con el show de los portugueses, en el que las sillas de ruedas se cruzaban con las tracciones, y las sonrisas superaban todas las barreras.

PRESENTATIONS

2008

audience: 2130 people

EntreDanzas – Dance on the Street Showcase



Galiza, Santiago de Compostela, Spain

http://www.youtube.com/watch?v=zYOqLn_tvSE

3rd International Festival Coimbra Dança

Coimbra, Portugal

FIAR X – International Festival of Street Arts

Palmela, Portugal

Expo Zaragoza 2008

Saragoça, Spain

Lugar à Dança – International Festival in Urban Landscapes

Lisbon, Portugal

II International Congresso on Art, Brain and Languages



with the participation of the group of sax players Vento do Norte

Casa da Música, Oporto, Portugal

youtube.com/watch?v=qvL2_VEKD7Y&feature=channel

2009

audience: 11570 people

Festival de Teatro y Artes de Calle



Valladolid, Spain

Festival Imaginariu – International Festival of Street Theatre

Santa Maria da Feira, Portugal

Animations at Praça da Liberdade

Almada, Portugal

Festa do AVANTE

Setúbal, Portugal

MITO – International Theatre Showcase Oeiras

Oeiras, Portugal

<http://www.youtube.com/watch?v=zeAK29NZsi0>

Festival Corpi Urbani



Génova and Finalmarina, Itália

Congress Thinking the Future

Lisbon, Portugal

Alcultur Meetings Lagos 2009

Lagos, Portugal

Opening Cerimony for the Special Olympics European

Football Tournament 09

Porto Salvo, Portugal

Auditorium José Afonso

with the participation of the Choral “Os Amigos dos Sadinós”

Setúbal, Portugal

youtube.com/watch?v=WHPmEZTO6Pc

Integrated Performance

with the participation of Tavira Music Band and Irene Rolo

Foundation | Tavira, Portugal

youtube.com/watch?v=yhjQSYXvuqg

2010

audience: 6005 people

Greenfest

Centro de Congressos do Estoril, Portugal

Dance International Forum

São José do Rio Preto and Votuporanga, Brazil

40th Aniversary of C.R.P.C.C.G.

Lisbon, Portugal

Teatro Micaelense



Ponta Delgada, Azores, Portugal

Empape – Street Dance Festival

Corunna, Spain

Boccia World Championship Opening

Lisbon, Portugal

Visões Urbanas Festival



São Paulo, Brazil

2011

audience: 2790 people

Lugar à Dança – International Festival in Urban Landscapes

Lisbon, Portugal

Festival Chalon Dans la Rue 25th edition

Transnational Festival of Street Performers

Chalon-sur-Saône, France

Andanças

São Pedro do Sul, Portugal

45th Anniversary of Centro Medicina de Reabilitação de Alcoitão

Cascais, Portugal

International Dance Contest Gala

Oeiras, Portugal

Casas da Granja – APCL Inauguration

Odivelas, Portugal

World Disability Day Commemorations National Institute of

Rehabilitation – INR

Lisbon, Portugal

Procur.arte Formas Performative Arts Fair

Tavira, Portugal

2nd, 3rd, and 4th photos © A. Roque

TEAM



ANA RITA BARATA

Artistic Direction and Choreography

Born in Paris in 1972. Studied classic and modern Dance at Escola Superior de Dança - Conservatório Nacional (Lisbon, Portugal) and at European Dance Development Centre in Arnhem (The Netherlands), in fields such as Improvisation, Awareness, Body-Mind-Centre, Complex Movement, Contact/Improvisation and Video. She studied the Asthanga Vinyasa Yoga method in Europe with several masters. Highlighted, some of the choreographers she worked with: Paulo Ribeiro, João Fiadeiro, Jean Paul Bucchieiri, Yoshiko Chuma, Carolyn Carlson, Wim Vandekeybus, Benoit La Chambre, Steve Paxton, Eva Karczag, Peter Hulton, Laurie Booth, Georges Appaix, Jos Houben, Daniel Lepkoof e Samuel Louwick / Alain Platel. Since 1994 she has developed several trans-disciplinary performances together with Pedro Sena Nunes, involving different communities with special needs. She works as Artistic Director and Programmer of Vo'Arte since 1997, organizing several cultural events. She is the co-creator of CiM – Integrated Multidisciplinary Company.



PEDRO SENA NUNES

Artistic Direction and Sound

Born in Lisbon in 1968. Director, producer, photographer, traveller and tree times father. Pedro completed his degree in Cinema in 1992 at the Escola Superior de Teatro e Cinema (Theatre and Cinema Superior School), after attending the Lisbon Engineering Institute in 1989. Co-founded the Companhia de Teatro Meridional (Southern Theatre Company), in which he was responsible for the audiovisual field. Between several European cities he participated in film, photography, video, theatre and creative writing courses and workshops as fellow of several institutions. He has directed numerous documentaries, fictions and experimental works in cinema and video and produced over 100 radio and TV publicity spots. Throughout is extended curricula, Pedro has been awarded several prizes and distinctions in the areas of photography, video and cinema. He as Creative and Pedagogical Director of ETIC – Technical School of Image and Communication. Currently, he is coordinator of Post-Production at ETIC Algarve, teaches direction and documentary at IPA, ESMAE; Algarve Film Commission, Ao Norte, Escrever Escrever and others. He collaborates as artistic consultant and, together with Ana Rita Barata, works as artistic director of Vo'Arte Association, where he co-directs various dance and video/film festivals.



ALENA DITTRICHOVÁ

Dancer

Dancer, performer and choreographer from Czech-Republic, born in Prague in 1980. Her work includes original productions that are a balance between dance and theatre. Her full-length author debut of the performance SEKRET was nominated for the 2003 SAZKA Awards and by Divadelní Noviny in the category of dance and ballet. Between 2004 and 2008, she worked at JAMU (Performative Arts School at Brno) as special assistant of Professor Ctibor Turba. As dancer and performer she has worked with both Czech and foreign artists, including: Claudie Brumachon, Serge Ambert, Pierre Nadea and Ctibor Turba. On dance and theatre improvisation she cooperates with musicians such as Irena and Vojtech Havel and with the dancers Jiri Lossl and Ondrej Lipovský. She's part of CiM – Integrated Multidisciplinary Company since 2010.



BRUNO RODRIGUES

Dancer

Born in Lisbon in 1981. He began his dance studies at Escola de Dança de Mafra in 1999 and graduated from the Escola Superior de Dança in 2010, where he worked with the choreographers Madalena Victorino, Gonçalo Ferreira, Francisco Camacho, Teresa Ranieri and Amélia Bentes, among others, while training other artistic areas. He emphasizes his participation between 2008 and 2010, as a performer and performative co-ordination in Feinprobe Honigsuss, an art exchange project with about 30 artists from different areas, conducted in Germany. In parallel to his work as a freelancer interpreter/dancer, Bruno develops teaches contemporary dance and since 2008 began his career as an independent artist, highlighting ... about time and time ... (2009), Espelho-Mirror (2010) and Croqui do corpo em retrato pronto (2011). Throughout his career as interpreter/performer, he has embraced some projects and companies such as Amalgama Companhia de Dança, CiM, WBmotion, European Roots Movement, Companhia Instável, ART BLOC 48, projecto Compota, among others.



ADELAIDE OLIVEIRA

APCL and CRPCCG Performer

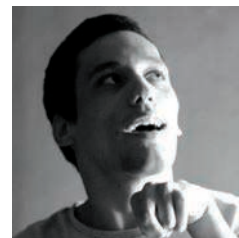
Born in 1973 in Guinea Bissau. She likes music, watching/listening to news, sports, cinema, going on walks, dancing, going out at night, travelling with the family. Projects Adelaide is involved at: Hydrotherapy, Theatre, fashion shows, actress in a short-film, Arraiolos carpets, Tricycle, Adapted Sail and CiM Company, performances *Mode H, On Wheels, Here, After* and *Nothing*.



JORGE GRANADAS

APCL and CRPCCG Performer

Born in Ferreira do Alentejo in 1977. He likes reading, exploring computer programs, watching sports live or on TV, trying out new things, writing, watching exhibitions. He participated in projects related to music and theatre, such as: Boccia, Social Autonomy, Literary Routes and CiM – *On Wheels, Here* and *Nothing*.



JOSÉ MARQUES

APCL and CRPCCG Performer

Born in 1991 in Vila Franca de Xira. He likes sports, reading sports newspapers, watching musicals, watching TV, socializing. He was involved in the projects: Boccia (documentary) and CiM, performances *On Wheels, Here* and *After*.



ZAIDA PUGLISE

APCL and CRPCCG Performer

Born in Angola in 1993. She likes listening to music, talking, taking strolls, helping others and watching the stars from her window at night. She participated at CiM's projects *Mode H, On Wheels* and *Here*.



ANTÓNIO PAIVA

APCL and CRPCCG Performer and Technician

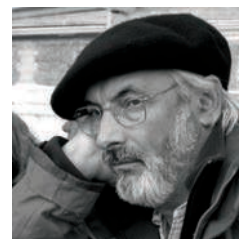
Born in Lamego, 1968. Graduated in Decorative Arts, Patrimony Course, ESAD – Fundação Ricardo Espírito Santo Silva. Taught the field of Handcraft Works and Weaving at several schools, among them António Arroio, as well as Artistic and Handcraft Technologies Workshop at Escola Superior de Educação Jean Piaget, Sociocultural Animation course. Teaches the professional course of Manual Needlework in Tapestry and monitors the Tiles and Fire Arts area, at C.R.P.C.C.G. In 2007, he was invited to be a performer and participant in CiM project.



CAROLINA SANTOS

APCL and CRPCCG Performer and Technician

Born in Lisbon in 1972. In September 1994 she begins to work assisting education at C.R.P.C.C.G. and later becomes responsible for the Fire Arts Practice. She participated in several cultural and recreational activities focused on Social Integration. Participates as interpreter since 2007 in CiM's projects *Mode H, On Wheels* and *Here*.



A. ROQUE

Executive Direction

Born in 1943 at Tortosendo, Covilhã. From 1955 to 1972 he worked in several fields from carpenter to street educator (in which he became specialized) and photographer, area to which he is particularly devoted since 1976. He has worked in the Portuguese public function for nearly thirty years. Nowadays he pays volunteer work in several institutions/associations. He is president of Vo'Arte Association General Assembly and Director of CiM – Integrated Multidisciplinary Company.



CÉLIA CARMONA

Executive Coordination

Célia Carmona is 44 years old and holds a degree in Psychology and post-graduations in Neuropsychology, Counseling, Psychotherapy and Sexual Health. After working in Educational Management at the Psicopedagogical Center ACM, she starts to work at CRPCCG on 1994. She streamlines projects that promote the development of cognitive and emotional social skills, personal fulfilment and social integration, namely Literary Routes and collaboration in CiM performances *Mode H, On Wheels, Here, After* and *Nothing*.



ARTISTIC CAST

Artistic Direction

Ana Rita Barata
Pedro Sena Nunes

Choreography

Ana Rita Barata

Dancers and Performers

Adelaide Oliveira
Alena Dittrichová
Ana Rita Barata
Bruno Rodrigues
Jorge Granadas
José Marques
Zaida Pugliese

Performers and Technicians

APCL e CRPCCG
António Paiva
Carolina Santos

Sound

Pedro Sena Nunes

Official Technicians

Wood
João Macedo

Metals

António Lopes

Sew

Maria Pinto Luís

Rehabilitation Technicians

Ocupacional Therapy

Paula O'Neill

Psychology

Célia Carmona

Executive Direction

A. Roque

Executive Coordination

Célia Carmona

Production

Clara Antunes

Co-Production

Associação Vo'Arte
Cerebral Palsy Association Lisbon
(APCL),
Rehabilitation Centre for Cerebral
Palsy Calouste Gulbenkian
(CRPCCG)

CONTACTS

Associação Vo'Arte
Rua São Domingos à Lapa 8N,
1200-835 Lisboa
Tel. (+351) 213932410
Mob. (+351) 919 939 740
Fax. (+351) 213932415

voarte@voarte.com

www.voarte.com (soon)
www.voarte.jimdo.com

companhiacim.jimdo.com
ciaintegradamultidisciplinar.
blogspot.com

VOARTE and Cia Cim are on
Facebook

CiM

COMPANHIA INTEGRADA MULTIDISCIPLINAR

CiM – Integrated Multidisciplinary Company is a professional contemporary dance-physical theatre Company which joins together interpreters with and without disability, promoting a quite unique approach to inclusion while aiming for high artistic standards.

CiM searches diversity and a constant enriching with experiences, being its multidisciplinary loom an impulse to find new methods and answers to creation and exploring. Ana Rita Barata, the Company's choreographer, develops a personal work focused on the particular movement and unique expressiveness of each interpreter, in search of integrating limitations and determine action by the best each one presents.

CiM's work has been presented through Portugal, Spain, France, Germany, Italy, Brazil and U.S.A., attended by over 43.000 people in 4 years.

CiM was born in late 2007, from the *Mode H* project, created specifically to participate at the European Festival of Adapted Fashion for People with Disabilities, held in Tours, France. CiM was created from a partnership between APCL – Cerebral Palsy Association Lisbon, Vo'Arte Association and CRPCCG - Rehabilitation Centre for Cerebral Palsy Calouste Gulbenkian. The partnership is maintained and generated stronger commitments by the artistic and executive direction, the performers, technicians, institutions and above all to the public, constantly acquiring new motivations, challenges and persisting on the reflection of the connection between art and disability, as a crucial mean of integration and skills development.



CiM repertoire includes:

Stage performances

Baton Rouge (2007);
EXI (2009);
Time trilogy:
Here (2009);
After (2010);
Nothing (2012);
Modern Times (2011).

Performances

Fish Memory (2009);
Waste (2010).

Espectáculos de rua

On Wheels (2008).

Instalação vídeo

Dive (2009).

Exposição de desenho

Ethereal (2009).

Site-specific creations are also one of the Company's most important axes, with over 6.000 public attendances in 3 years and 18 performances.

CiM also cares for a sustained development of inclusive dance formation, which aims to increase awareness to the expressive potential of differences on movement and to promote integration at its most comprehensive sense.

production



co-production



voarte structure financed by



support



modalfa

